



**COMMONWEALTH OF KENTUCKY  
TRANSPORTATION CABINET**  
Frankfort, Kentucky 40622  
[www.transportation.ky.gov/](http://www.transportation.ky.gov/)

**Matthew G. Bevin**  
Governor

**Greg Thomas**  
Secretary

July 14, 2017

CALL NO. 329  
CONTRACT ID NO. 172981  
ADDENDUM # 1

Subject: Jefferson County, FE02 056 0064 B00285N  
Letting July 28, 2017

- (1) Added - Special Notes Applicable to Project -  
Pages 10(a) AND 11(a) through 11(b) AND 18(a) through 18(f) of 30
- (2) Revised - Special Notes Applicable to Project -  
Pages 11, 12, 14, 15, & 18 of 30
- (3) Revised - Bid Items - Page 30 of 30

Proposal revisions are available at <http://transportation.ky.gov/Construction-Procurement/>.

If you have any questions, please contact us at 502-564-3500.

Sincerely,

A handwritten signature in cursive script that reads "Rachel Mills".

Rachel Mills, P.E.  
Director  
Division of Construction Procurement

RM:ks  
Enclosures



An Equal Opportunity Employer M/F/D

# MAINTENANCE OF TRAFFIC FOR UNIT 1 PIN REHABILITATION



**MAINTENANCE OF TRAFFIC:**

THE CONTRACTOR SHALL BE ALLOWED TO CLOSE THE PARKING LANE OF THE EASTBOUND LANE WHILE MAINTAINING A 10-FOOT MINIMUM DRIVING LANE.

## **SPECIAL NOTE FOR CONTRACT COMPLETION DATE AND LIQUIDATED DAMAGES ON BRIDGE REPAIR CONTRACTS**

**I. COMPLETION DATE.** The Contractor has the option of selecting the starting date for this Contract. Once selected, notify the Department in writing of the date selected at least two weeks prior to beginning work. All work is to be completed by **November 15, 2017**. An allotted number of Calendar days are assigned to each structure in this contract as shown below.

STRUCTURE	NO. OF CALENDAR DAYS	COMPLETION DATE
056B00285N and 056B00293N	30	<b>November 15, 2017</b>

Contrary to Section 108.07.02, the Engineer will begin charging calendar days for a structure on the day the Contractor starts work or sets up traffic control on that particular structure.

**II. LIQUIDATED DAMAGES.** Liquidated damages will be assessed the Contractor in accordance with the Transportation Cabinet, Department of Highway's 2012 Standard Specifications for Road and Bridge Construction, Section 108.09, when either the allotted number of calendar days or the **November 15, 2017** date is exceeded.

Contrary to the Standard Specifications, liquidated damages will be assessed the Contractor during the months of December, January, February and March when the contract time has expired on any individual bridge or bridges. Contract time will be charged during these months.

All construction must be completed in accordance with the weather limitations specified in Section 606 and/or Section 601 as applicable. No extension of Contract time will be granted due to inclement weather or temperature limitations that occur due to starting work on the Contract or a structure late in the construction season.



# SITE MAP – WORK AREA

## 17<sup>th</sup> to 13<sup>th</sup> Street Bridge (B285)

Unit 1 – Pin Rehabilitation and

Unit 3 – Pier Girder 13 Rehabilitation

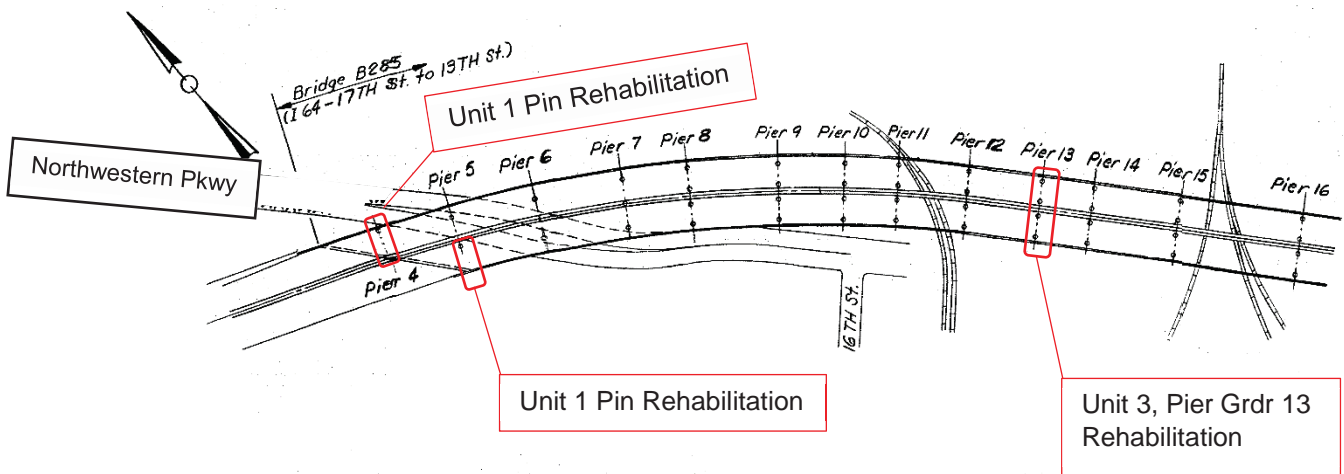




# SITE MAP – WORK LOCATIONS



UNIT 1 PIN  
REHABILITATION  
WORK AREA



UNIT 3 PIER GRDR 13  
REHABILITATION  
WORK AREA

**GENERAL NOTES:**

PERFORM ALL WORK IN ACCORDANCE WITH THE KENTUCKY TRANSPORTATION CABINET, DEPARTMENT OF HIGHWAYS 2012 STANDARD SPECIFICATIONS FOR ROAD AND BRIDGE CONSTRUCTION AND THE DETAILED DRAWINGS.

THE WORK CONSISTS OF INSTALLING BOLTS AT THE PIER GIRDER PIN CONNECTIONS OF FIVE GIRDERS WITHIN UNIT I OF I-64 OVER NORTHWESTERN PARKWAY, AND STRENGTHENING PIER 13 FLOORBEAM BOTTOM FLANGE WITHIN UNIT III OF I-64 BETWEEN 17TH AND 13TH STREETS.

THE UNIT I WORK LOCATIONS ARE AT SPAN 3 GIRDERS B & C (WB I-64) AT PIER GIRDER 4 AND AT SPAN 4 GIRDERS F, G, & H (EB I-64) AT PIER GIRDER 5. THE UNIT III WORK LOCATION IS AT PIER 13 (WB I-64) AND PIER 13 (EB I-64).

A COPY OF THE BRIDGE ORIGINAL CONSTRUCTION CONTRACT PLANS DRAWING NO. 17122, INCLUDING SHOP DRAWINGS, WILL BE AVAILABLE THROUGH PROJECT RELATED INFORMATION.

ALL DIMENSIONS ARE AS SHOWN ON THE ORIGINAL CONSTRUCTION CONTRACT PLANS.

RESIDUAL LEAD PAINT MAY STILL BE ON THE BRIDGE, EVEN AFTER PREVIOUS SANDBLASTINGS AND PAINTING THE BRIDGE. THE CONTRACTOR IS ADVISED TO TAKE ALL NECESSARY PROTECTIVE MEASURES WHEN PERFORMING ANY ACTIONS ON THE EXISTING STEEL. THE DEPARTMENT WILL NOT CONSIDER ANY CLAIMS BASED ON LEAD PAINT.

DIMENSIONS SHOWN ON THESE PLANS ARE TAKEN FROM ORIGINAL CONSTRUCTION CONTRACT PLANS AND DO NOT NECESSARILY REFLECT REVISIONS MADE DURING CONSTRUCTION. THE CONTRACTOR SHALL FIELD VERIFY DIMENSIONS, INCLUDING STIFFENER SPACINGS, WITH FIELD MEASUREMENTS PRIOR TO ORDERING MATERIALS. ALL PLAN DIMENSIONS ARE FOR A NORMAL TEMPERATURE OF 60 DEG F. LAYOUT DIMENSIONS ARE HORIZONTAL MEASUREMENTS.



**UNIT III - PIER GIRDER 13**



**UNIT I - PIN REHABILITATION**

FILE NAME: C:\PWW81-LOCAL\BAKER-PROJECTS\CWETHINGTON\0507802\13TH-17TH SPANS.DGN

USER: cwethington  
 DATE PLOTTED: July 12, 2017

E-SHEET NAME: S23464 266

MicroStation v8.11.9.829

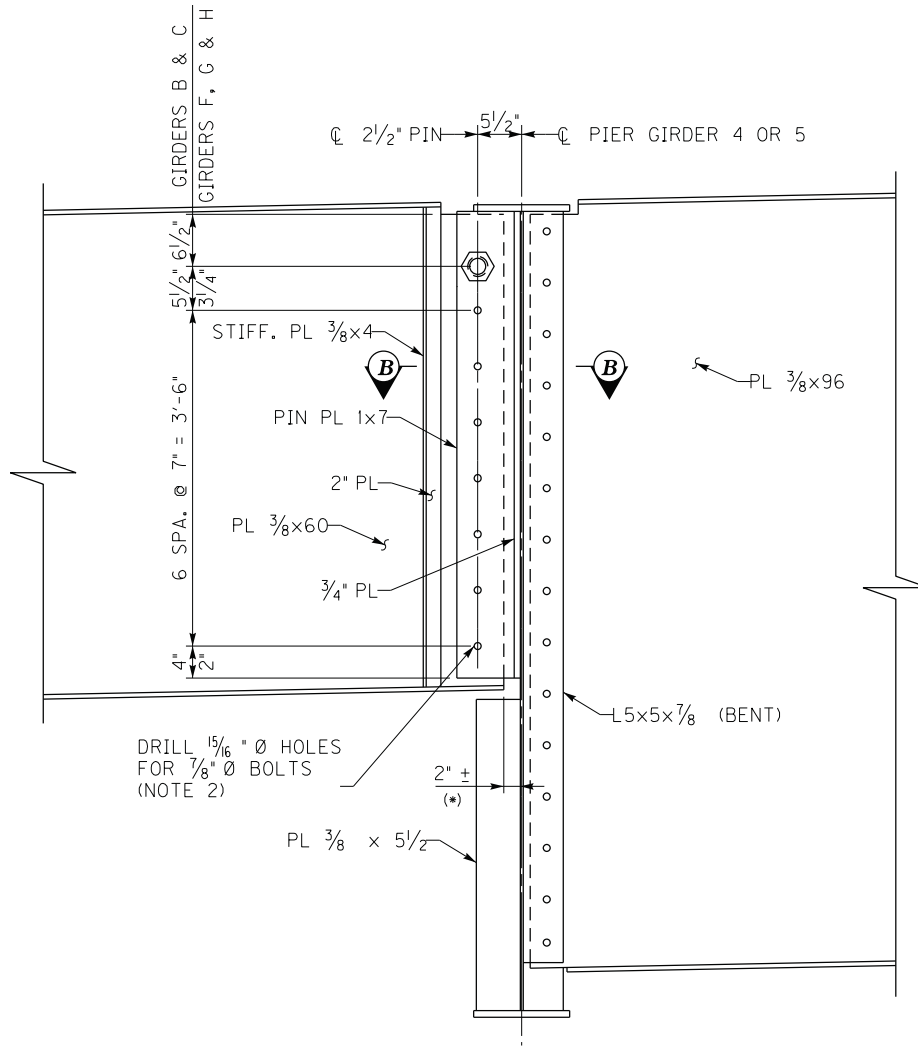
DATE: MAY 2017		CHECKED BY	
DESIGNED BY: JCS		DMB	
DETAILED BY: MJD		DMB	
<b>Commonwealth of Kentucky</b> DEPARTMENT OF HIGHWAYS			
COUNTY <b>JEFFERSON</b>			
ROUTE <b>I-64</b>	CROSSING <b>13TH TO 17TH STREET</b>		
<b>REHABILITATION DETAILS</b>			
PREPARED BY <b>Michael Baker</b> INTERNATIONAL		1650 Lyndon Farm Court Louisville, KY 40223 Phone: (502) 339-3557 MBAKER@NTL.COM	SHEET NO. <b>1 / 7</b>

FILE NAME: C:\PWP\81-LOCAL\BAKER-PROJECTS\CWETHINGTON\0507802\13TH-17TH DETAILS2.DGN

USER: cwethington  
 DATE PLOTTED: July 12, 2017

E-SHEET NAME: S23464 266

MicroStation v8.11.9.829



**SECTION A-A (GIRDERS B & C)**  
**SECTION C-C (GIRDERS F, G & H)**

**NOTES: UNIT 1 – PIN REHABILITATION**

1. EXISTING STEEL IS ASTM A36; ALL NEW STEEL SHALL BE ASTM A709 GRADE 36.
2. ALL NEW BOLTS SHALL BE 7/8 INCH ASTM F3125 GRADE A325-X TYPE I GALVANIZED HIGH STRENGTH BOLTS, A563 DH NUTS, AND F436 FLAT WASHERS. INSTALL BOLTS USING DIRECT TENSION INDICATORS (DTIs) MECHANICALLY ZINC COATED ACCORDING TO 607.03.05(B) OF THE SPECIFICATIONS.
3. INSTALL A FILLER 1/8 INCH x 2 INCH EACH SIDE BETWEEN THE 2 INCH PLATE AND THE 1 INCH PLATE PRIOR TO BOLT TIGHTENING.
4. THE LUMP SUM BID PRICE MUST INCLUDE THE COST FOR ALL LABOR, EQUIPMENT, MATERIALS AND INCIDENTALS TO COMPLETE THE DESCRIBED WORK AT FIVE LOCATIONS IN ACCORDANCE WITH THE PLANS AND SPECIFICATIONS. PAYMENT WILL BE MADE AT LUMP SUM CONTRACT PRICE FOR UNIT I PIN REHABILITATION (a) AND (b).

(a) PAY ITEM                      SUPPLEMENTAL DESCRIPTION                      PAY UNIT  
 REPAIR BRIDGE                      UNIT I - PIN REHABILITATION                      LS

(b) THE LUMP SUM BID ITEM INCLUDES THE FOLLOWING ESTIMATED QUANTITIES:

STRUCTURAL STEEL (GRADE 36)	35 LBS
STRUCTURAL STEEL (BOLTS)	60 LBS

5. SEE SHEET NO. 4/7 FOR SECTION B-B AND NOTES.

**LEGEND**

\* NOTIFY THE ENGINEER IF THE DIMENSION BETWEEN END OF GIRDER AND FACE OF PIER GIRDER WEB IS MORE THAN 2 1/2"

**UNIT I – PIN REHABILITATION**

DATE: MAY 2017	CHECKED BY
DESIGNED BY: JCS	DMB
DETAILED BY: MJD	DMB

**Commonwealth of Kentucky**  
**DEPARTMENT OF HIGHWAYS**

COUNTY  
**JEFFERSON**

ROUTE <b>I-64</b>	CROSSING <b>13TH TO 17TH STREET</b>
----------------------	--

**REHABILITATION DETAILS**

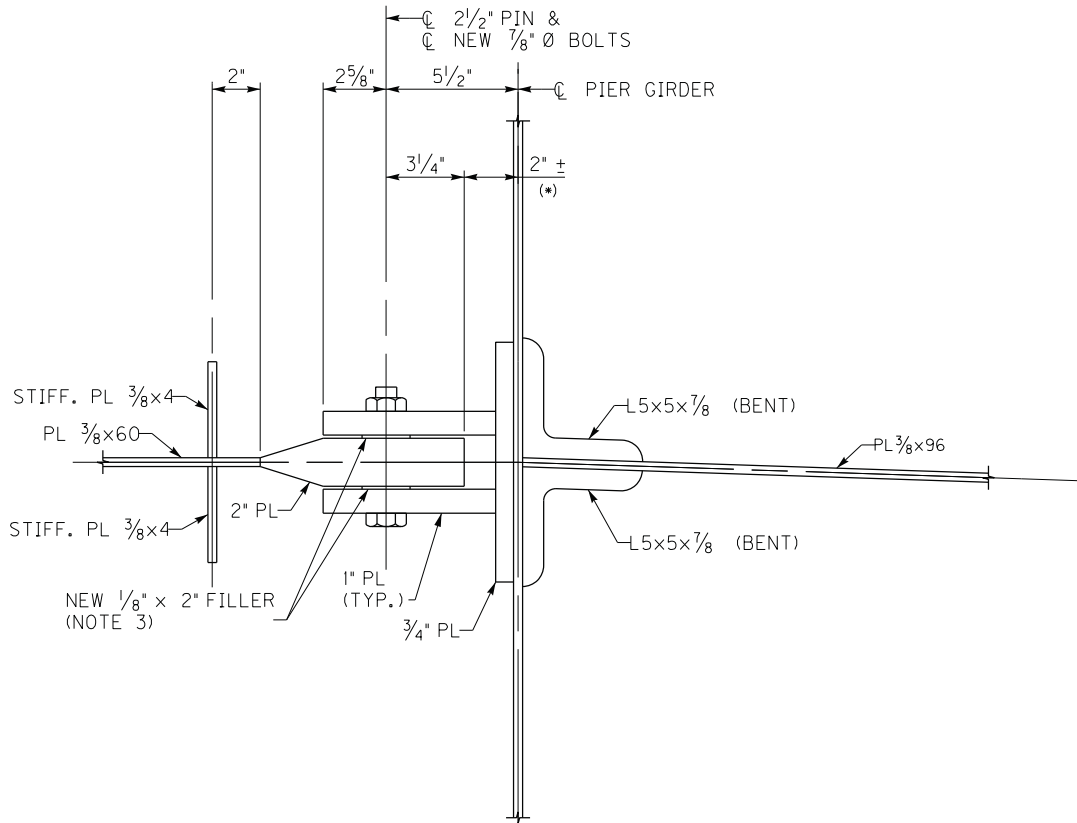
PREPARED BY <b>Michael Baker INTERNATIONAL</b>	1650 Lyndon Farm Court Louisville, KY 40223 Phone: (502) 339-3557 MBACKER@NTL.COM	SHEET NO. <b>3 / 7</b>
---	--	---------------------------

FILE NAME: C:\PWV81-LOCAL\BAKER\_PROJECTS\CWETHINGTON\0507802\13TH-17TH DETAILS2.DGN

USER: cwethington  
 DATE PLOTTED: July 12, 2017

E-SHEET NAME: S23464 266

MicroStation v8.11.9.829



**SECTION B-B**

**NOTES: UNIT 1 - PIN REHABILITATION**

6. SEE SHEET NO. 3/7 FOR NOTES.

7. REPAIR DAMAGED PAINT AREAS OF EXISTING STEEL CAUSED BY THE CONTRACTOR DURING CONSTRUCTION IN ACCORDANCE WITH 607.03.23 OF THE STANDARD SPECIFICATIONS. ALL COST SHALL BE CONSIDERED INCIDENTAL TO THE CONTRACT.

8. PAINTING DAMAGED PAINT AREAS SHALL CONSIST OF ONE COAT OF ZINC RICH PRIMER. FEATHER THE EXISTING PAINT TO EXPOSE A MINIMUM OF 1/2 INCH OF EACH COAT. APPLY THE PRIME COAT ONLY TO THE SURFACE OF BARE STEEL AND THE EXISTING PRIME COAT EXPOSED BY FEATHERING. DO NOT APPLY THE PRIME COAT TO THE ADJACENT INTERMEDIATE COAT. ALL COST SHALL BE CONSIDERED INCIDENTAL TO THE CONTRACT.

**UNIT 1 - PIN REHABILITATION**

DATE: MAY 2017		CHECKED BY	
DESIGNED BY: JCS		DMB	
DETAILED BY: MJD		DMB	
<b>Commonwealth of Kentucky</b> DEPARTMENT OF HIGHWAYS			
COUNTY <b>JEFFERSON</b>			
ROUTE <b>I-64</b>	CROSSING <b>13TH TO 17TH STREET</b>		
<b>REHABILITATION DETAILS</b>			
PREPARED BY <b>Michael Baker INTERNATIONAL</b>		SHEET NO. 1650 Lyndon Farm Court Louisville, KY 40223 Phone: (502) 339-3557 MBAKER@NTL.COM	
		4 / 7	



**NOTES: UNIT III – PIER GIRDER 13 REHABILITATION**

1. EXISTING STEEL IS ASTM A36; ALL NEW STEEL SHALL BE ASTM A709 GRADE 50.
2. ALL NEW BOLTS SHALL BE 7/8 INCH ASTM F3125 GRADE A325-X TYPE I GALVANIZED HIGH STRENGTH BOLTS, A563 DH NUTS, AND F436 FLAT WASHERS. INSTALL BOLTS USING DIRECT TENSION INDICATORS (DTIs) MECHANICALLY ZINC COATED ACCORDING TO 607.03.05(B) OF THE SPECIFICATIONS.
3. MATCH DRILL THE FLOORBEAM FLANGE USING SHOP DRILLED HOLES IN THE NEW PLATE TO ENSURE ACCURACY OF FIELD FIT UP.
4. ALL NEW STEEL SHALL RECEIVE ONE FULL COAT OF PRIMER IN ACCORDANCE WITH 607.03.23(B) & (C) PRIOR TO SHIPPING STEEL FROM THE PLANT.

5. EXISTING STEEL CONTACT AREAS FOR THE NEW PLATE SHALL RECEIVE A SURFACE PREPARATION BY SSPC-SPI0 OR SSPC-SPI5 AND RECEIVE ONE COAT OF ZINC RICH PRIMER MEETING CLASS B SLIP COEFFICIENT RATING IN ACCORDANCE WITH 607.03.23 OF THE SPECIFICATIONS.

6. REPAIR DAMAGED PAINT AREAS IN ACCORDANCE WITH 607.03.23(F) OF THE SPECIFICATIONS.
7. THE LUMP SUM BID PRICE MUST INCLUDE THE COST FOR ALL LABOR, EQUIPMENT, MATERIALS AND INCIDENTALS TO COMPLETE THE DESCRIBED WORK AT UNIT III PIER 13 WB AND PIER 13 EB IN ACCORDANCE WITH THE PLANS AND SPECIFICATIONS. PAYMENT WILL BE MADE AT LUMP SUM CONTRACT PRICE FOR UNIT III PIER 13 REHABILITATION (a) AND (b).

(a) PAY ITEM SUPPLEMENTAL DESCRIPTION PAY UNIT  
 REPAIR BRIDGE UNIT III-PIER 13 REHABILITATION LS

(b) THE LUMP SUM BID ITEM INCLUDES THE FOLLOWING ESTIMATED QUANTITIES:

STRUCTURAL STEEL (GRADE 50)	650 LBS
STRUCTURAL STEEL (BOLTS)	206 LBS
CLEANING AND PAINTING	47 SFT

FILE NAME: C:\P\W81-LOCAL\BAKER\_PROJECTS\CWETHINGTON\0507802\13TH-17TH-DETAILS.DGN

USER: cwethington  
DATE PLOTTED: July 12, 2017

E-SHEET NAME: S23464 266

MicroStation v8.11.9.829

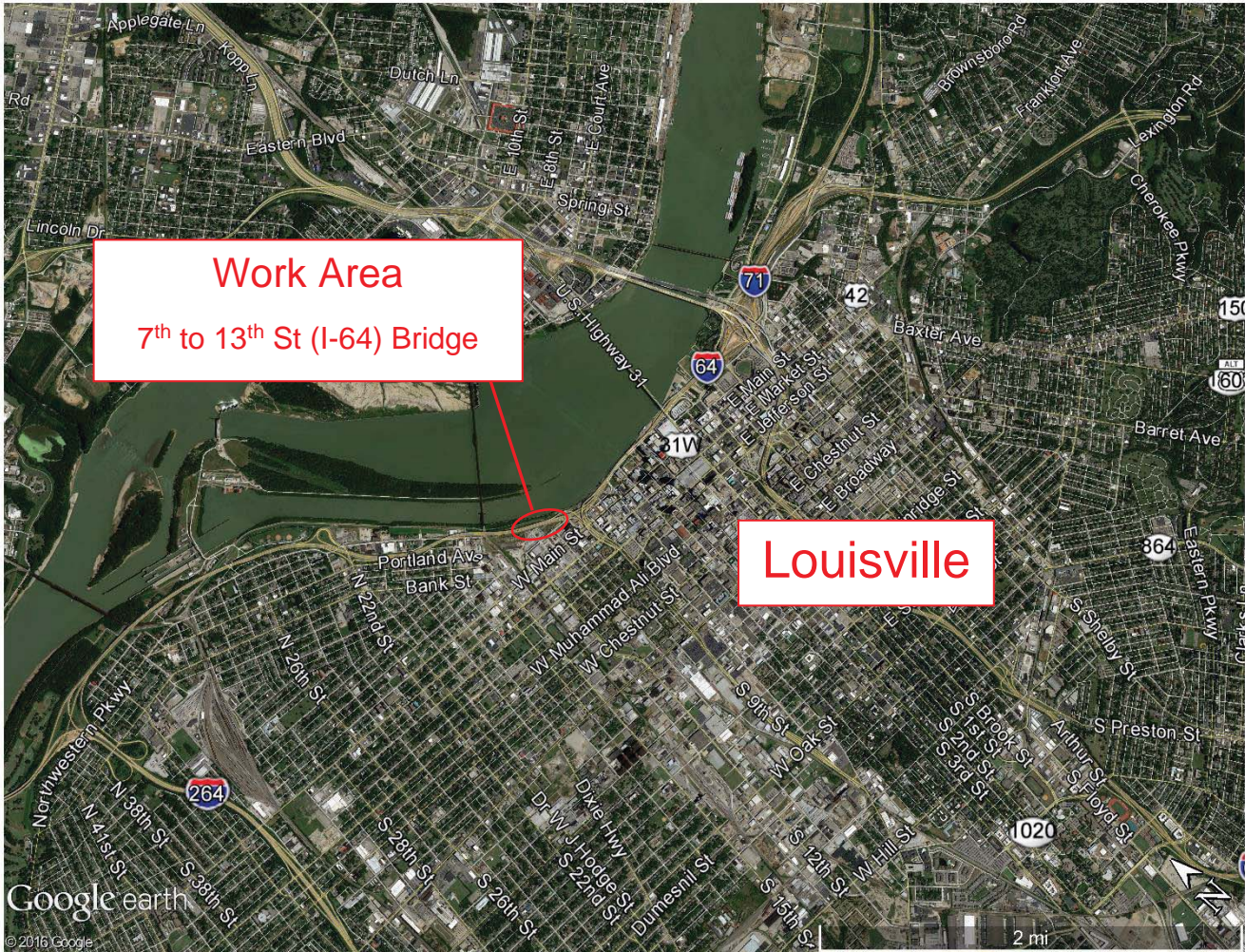
**UNIT III – REHABILITATION**

DATE: MAY 2017		CHECKED BY	
DESIGNED BY: JCS		DMB	
DETAILED BY: MJD		DMB	
<b>Commonwealth of Kentucky</b>			
<b>DEPARTMENT OF HIGHWAYS</b>			
COUNTY			
<b>JEFFERSON</b>			
ROUTE	CROSSING		
<b>I-64</b>	<b>13TH TO 17TH STREET</b>		
<b>REHABILITATION DETAILS</b>			
PREPARED BY			SHEET NO.
 <b>Michael Baker</b> INTERNATIONAL			1650 Lyndon Farm Court Louisville, KY 40223 Phone: (502) 339-3557 MBAKERNTL.COM  <b>7 / 7</b>

# SITE MAP – WORK AREA

## 7<sup>th</sup> to 13<sup>th</sup> Street Bridge (B293)

### Span 31, Unit 3 WB









**GENERAL NOTES:**

PERFORM ALL WORK IN ACCORDANCE WITH THE KENTUCKY TRANSPORTATION CABINET, DEPARTMENT OF HIGHWAYS 2012 STANDARD SPECIFICATIONS FOR ROAD AND BRIDGE CONSTRUCTION AND THE DETAILED DRAWINGS.

THE WORK CONSISTS OF STRENGTHENING GIRDER BOTTOM FLANGE WITHIN WB SPAN 31, UNIT III BETWEEN 7TH TO 13 TH STREETS.

THE UNIT III WORK LOCATION IS ON GIRDERS 3 OF I-64 WB.

A COPY OF THE BRIDGE ORIGINAL CONSTRUCTION CONTRACT PLANS DRAWING NO. 18572 WILL BE AVAILABLE THROUGH PROJECT RELATED INFORMATION.

ALL DIMENSIONS ARE AS SHOWN ON THE ORIGINAL CONSTRUCTION CONTRACT PLANS.

RESIDUAL LEAD PAINT MAY STILL BE ON THE BRIDGE, EVEN AFTER PREVIOUS SANDBLASTINGS AND PAINTING THE BRIDGE. THE CONTRACTOR IS ADVISED TO TAKE ALL NECESSARY PROTECTIVE MEASURES WHEN PERFORMING ANY ACTIONS ON THE EXISTING STEEL. THE DEPARTMENT WILL NOT CONSIDER ANY CLAIMS BASED ON LEAD PAINT.

DIMENSIONS SHOWN ON THESE PLANS ARE TAKEN FROM ORIGINAL CONSTRUCTION CONTRACT PLANS AND DO NOT NECESSARILY REFLECT REVISIONS MADE DURING CONSTRUCTION. THE CONTRACTOR SHALL FIELD VERIFY DIMENSIONS, INCLUDING STIFFENER SPACINGS, WITH FIELD MEASUREMENTS PRIOR TO ORDERING MATERIALS. ALL PLAN DIMENSIONS ARE FOR A NORMAL TEMPERATURE OF 60 DEG F. LAYOUT DIMENSIONS ARE HORIZONTAL MEASUREMENTS.



**SPAN 31, UNIT III WB – GIRDER 3**

FILE NAME: C:\PW\81-LOCAL\BAKER-PROJECTS\CWETHINGTON\052550\17TH-13TH SPANS.DGN

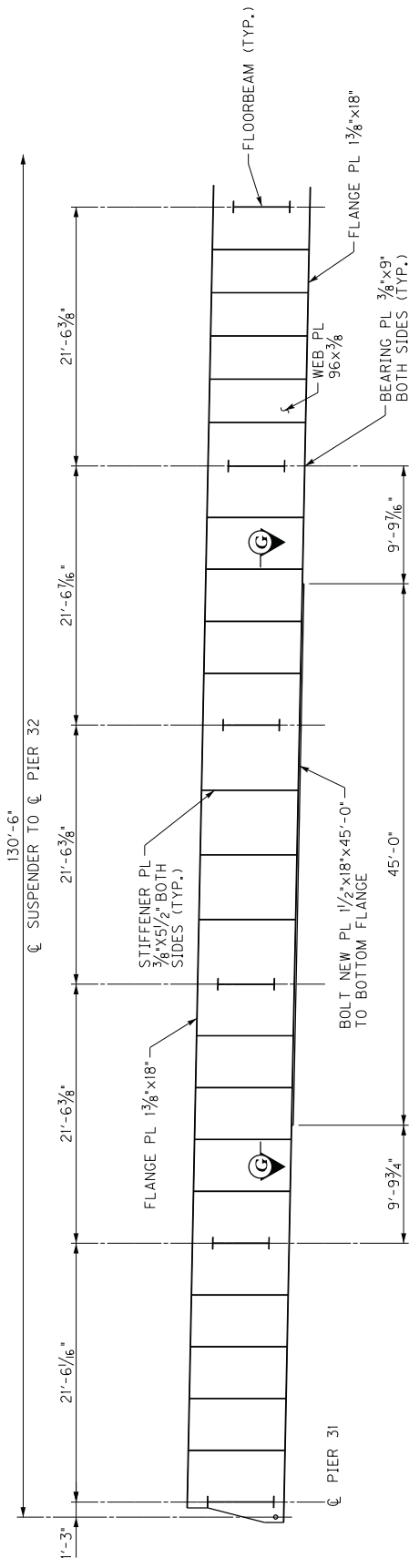
USER: cwethington  
 DATE PLOTTED: July 12, 2017

E-SHEET NAME:

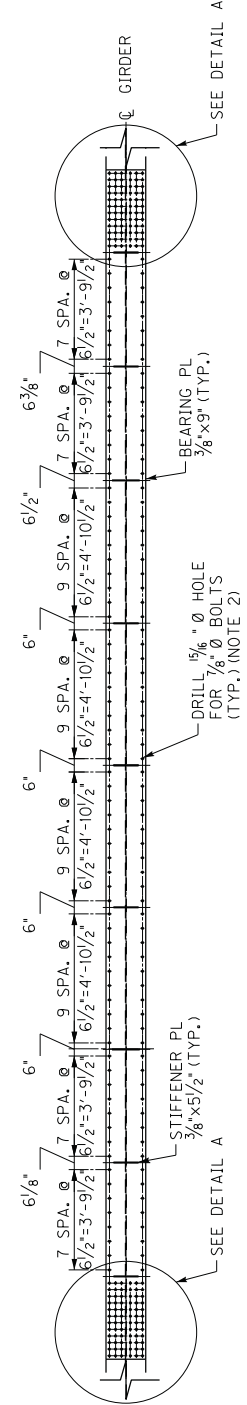
MicroStation v8.11.9.829

DATE: JULY 2017		CHECKED BY	
DESIGNED BY: JCS		DMB	
DETAILED BY: CEW		DMB	
<b>Commonwealth of Kentucky</b> DEPARTMENT OF HIGHWAYS			
COUNTY <b>JEFFERSON</b>			
ROUTE <b>I-64</b>	CROSSING <b>7TH TO 13TH STREET</b>		
<b>REHABILITATION DETAILS</b>			
PREPARED BY		SHEET NO.	
<b>Michael Baker</b> INTERNATIONAL		1650 Lyndon Farm Court Louisville, KY 40223 Phone: (502) 339-3557 MBAKER@NTL.COM	
		1 / 4	

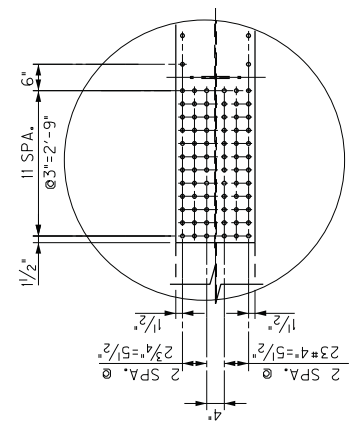




**SECTION F-F**  
 GIRDER 3



**SECTION G-G**



**DETAIL A**

**NOTES:**

- SEE SHEET NO. 4/4 FOR NOTES.

**UNIT III - REHABILITATION**

DATE: JULY 2017	CHECKED BY:
DESIGNED BY: JCS	DMB
DETAILED BY: CEW	DMB
<b>Commonwealth of Kentucky</b> DEPARTMENT OF HIGHWAYS	
<b>JEFFERSON</b> COUNTY	
ROUTE <b>I-64</b>	CROSSING <b>7TH TO 13TH STREET</b>
<b>REHABILITATION DETAILS</b>	
PREPARED BY <b>Michael Baker INTERNATIONAL</b>	SHEET NO. <b>3 / 4</b>



**NOTES: SPAN 31, UNIT III WB – GIRDER 3 REHABILITATION**

1. EXISTING FLANGE STEEL IS ASTM A588; ALL NEW STEEL SHALL BE ASTM A709 GRADE 50.
  2. ALL NEW BOLTS SHALL BE 7/8 INCH ASTM F3125 GRADE A325-X TYPE I GALVANIZED HIGH STRENGTH BOLTS, A563 DH NUTS, AND F436 FLAT WASHERS. INSTALL BOLTS USING DIRECT TENSION INDICATORS (DTIs) MECHANICALLY ZINC COATED ACCORDING TO 607.03.05(B) OF THE SPECIFICATIONS.
  3. MATCH DRILL THE FLOORBEAM FLANGE USING SHOP DRILLED HOLES IN THE NEW PLATE TO ENSURE ACCURACY OF FIELD FIT UP.
  4. ALL NEW STEEL SHALL RECEIVE ONE FULL COAT OF PRIMER IN ACCORDANCE WITH 607.03.23(B) & (C) PRIOR TO SHIPPING STEEL FROM THE PLANT.
  5. EXISTING STEEL CONTACT AREAS FOR THE NEW PLATE SHALL RECEIVE A SURFACE PREPARATION BY SSPC-SPI0 OR SSPC-SPI5 AND RECEIVE ONE COAT OF ZINC RICH PRIMER MEETING CLASS B SLIP COEFFICIENT RATING IN ACCORDANCE WITH 607.03.23 OF THE SPECIFICATIONS.
  6. REPAIR DAMAGED PAINT AREAS IN ACCORDANCE WITH 607.03.23(F) OF THE SPECIFICATIONS.
  7. THE LUMP SUM BID PRICE MUST INCLUDE THE COST FOR ALL LABOR, EQUIPMENT, MATERIALS AND INCIDENTALS TO COMPLETE THE DESCRIBED WORK AT GIRDER 3, SPAN 31, UNIT III WB IN ACCORDANCE WITH THE PLANS AND SPECIFICATIONS. PAYMENT WILL BE MADE AT LUMP SUM CONTRACT PRICE FOR GIRDER 3 UNIT III WB REHABILITATION (a) AND (b).
- (a) 

PAY ITEM	SUPPLEMENTAL DESCRIPTION	PAY UNIT
REPAIR BRIDGE	UNIT III WB-GRDR 3 REHABILITATION	LS
- (b) THE LUMP SUM BID ITEM INCLUDES THE FOLLOWING ESTIMATED QUANTITIES:
- |                             |          |
|-----------------------------|----------|
| STRUCTURAL STEEL (GRADE 50) | 4135 LBS |
| STRUCTURAL STEEL (BOLTS)    | 370 LBS  |
| CLEANING AND PAINTING       | 204 SFT  |

FILE NAME: C:\PW\81-LOCAL\BAKER\_PROJECTS\CWETHINGTON\052550\17TH-13TH DETAILS.DGN

USER: cwethington

E-SHEET NAME:

MicroStation v8.11.9.829

**UNIT III – WB REHABILITATION**

DATE: MAY 2017		CHECKED BY	
DESIGNED BY: JCS		DMB	
DETAILED BY: CEW		DMB	
<b>Commonwealth of Kentucky</b> DEPARTMENT OF HIGHWAYS			
COUNTY <b>JEFFERSON</b>			
ROUTE <b>I-64</b>	CROSSING <b>7TH TO 13TH STREET</b>		
<b>REHABILITATION DETAILS</b>			
PREPARED BY <b>Michael Baker INTERNATIONAL</b>			SHEET NO. <b>4 / 4</b>
1650 Lyndon Farm Court Louisville, KY 40223 Phone: (502) 339-3557 MBAKERINTL.COM			

### PROPOSAL BID ITEMS

172981

Page 1 of 1

Report Date 7/14/17

#### Section: 0001 - BRIDGE

LINE	BID CODE	ALT	DESCRIPTION	QUANTITY	UNIT	UNIT PRIC	FP	AMOUNT
0010	02562		TEMPORARY SIGNS	40.00	SQFT		\$	
0020	02650		MAINTAIN & CONTROL TRAFFIC UNIT 1 - PIN REHABILITATION	1.00	LS		\$	
0030	02653		LANE CLOSURE	1.00	EACH		\$	
0040	02775		ARROW PANEL	1.00	EACH		\$	
0050	30071		REPAIR BRIDGE UNIT 1 - PIN REHABILITATION	1.00	LS		\$	
0060	30071		REPAIR BRIDGE UNIT 3 - PIER 13 REHABILITATION	1.00	LS		\$	
0065	30071		REPAIR BRIDGE UNIT 3 WB - GIRDER 3 REHABILITATION (ADDED: 7-14-17)	1.00	LS		\$	

#### Section: 0002 - DEMOBILIZATION

LINE	BID CODE	ALT	DESCRIPTION	QUANTITY	UNIT	UNIT PRIC	FP	AMOUNT
0070	02569		DEMOBILIZATION	1.00	LS		\$	